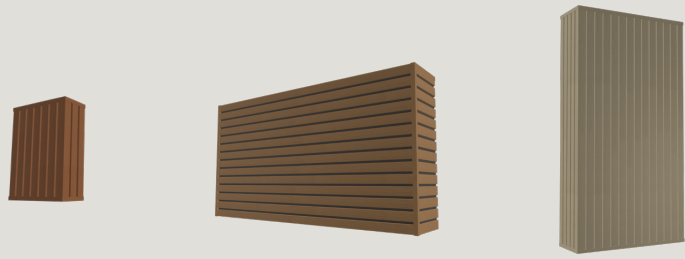


# Battery & Inverter Cover

## Info Pack



### What the product offers



Enhanced efficiencies



Adjustable ventilation strategy



Anti-theft



Weather protection



Improved system lifespan



Mechanical impact resistance



Enhanced aesthetics



30-year guarantee



100% recyclable



Natural wood imitation



Easy installation



Maintenance free

Payback period <10 yrs

*\*With insulation*

### Why the product exists

Given recent regulatory changes driving the external situation of electrical components, our covers are thoughtfully designed to address both the functional and aesthetic challenges this shift presents.

At Embrace Renewables, we are dedicated to overcoming the barriers to adoption, making the transition to renewable energy even more attractive and achievable.

# How the product works

Our recyclable UPVC-clad, aluminium-frame covers offer:



**Enhanced efficiency:** Internal heat entrapment maintains higher internal battery temperatures during cold snaps, reducing heat loss and ensuring optimal performance under insulated covers.



**Adjustable ventilation:** Ventilation gaps, sized in accordance with battery load, adjust to manage seasonal temperature fluctuations.



**Anti-theft:** Acting as a visual deterrent, the cover obscures the asset from view. For additional security we offer lockable systems with the option of a 100-decibel alarm system.



**Weather protection:** Shields assets from wind, hail, sunlight, and snow, preventing irreparable freeze damage and supporting warranty claims during an Act of God.



**Extended lifespan:** Performances degrade over time with exposure to high temperatures. Blocking sunlight mitigates this, enhancing longevity.



**Impact resistance:** Complies with PAS section 6.6, aiding impact resistance near parking areas.



**Aesthetic appeal:** Slatted panels in timber finishes conceal systems, blending seamlessly with outdoor spaces.

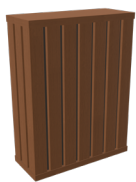


**30-year guarantee:** Durable composite cladding with a >30-year life expectancy.



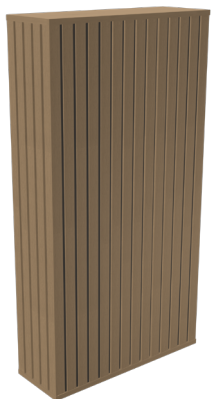
**Easy installation:** Simple 2-step push-fit and screw assembly.

# Standard products



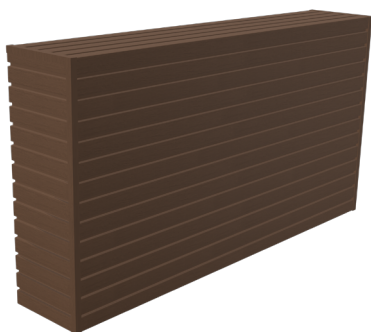
No battery? No problem!  
We offer stand-alone inverter covers.

Explore 5 colour options across all of our product offerings.



For stacked systems, our portrait covers provide the ultimate protection for your electrical storage system.

Additional insulation options for enhanced efficiencies provide product payback over time.



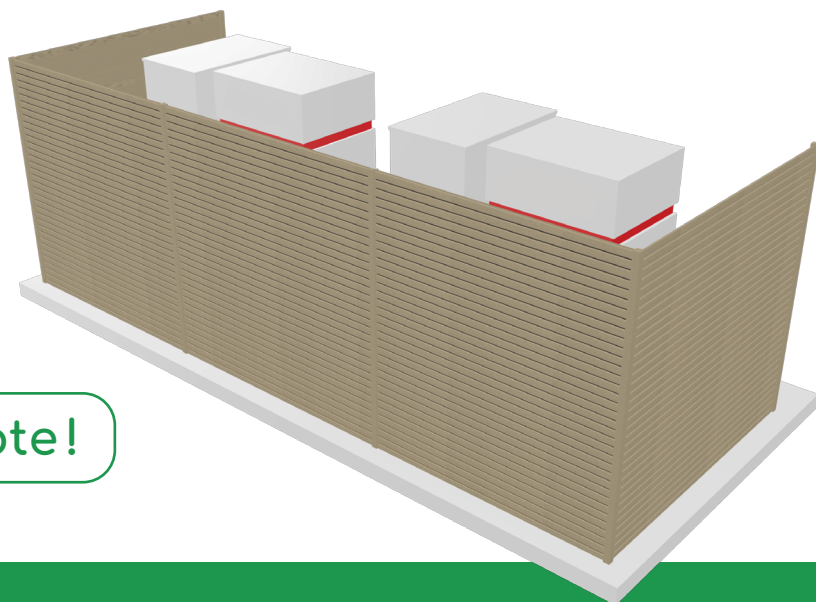
Landscape covers for side-by-side systems to provide versatility for all spacial configurations.

All covers come in a range of standardised sizes.

## Need something bespoke?

## Commercial applications

- All external M&E
- Branding strategies
- In-house design team



**Get in touch for a quote!**

[sales@solartradinguk.co.uk](mailto:sales@solartradinguk.co.uk)