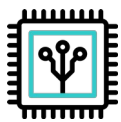


## Mediterranean Sea 10kW Single Phase



**Silicon Carbide Technology**  
Higher efficiency & Longer lifespan



**Battery Charge/Discharge Rate**  
Up to 105 A per input (210A max)



**Backup Power Supply**  
Dedicated EPS Port



**Smart Tariff Compatible**  
Smart energy device integration & intelligent work modes



**UK Cloud**  
Real time visibility  
Monitor & configure from anywhere

## Input Parameter (PV)

Max. DC Input Power	18 kWp
Starting Voltage	140 V
Max. Input Voltage	800 V
MPPT Voltage Range	130-800 V
Number of MPPT	3
Input String Per MPPT	1/1/1
Nominal Input Voltage	600V
MPPT Max. Input Current	20 A / 20 A / 20 A
MPPT Max. Short Circuit Current	24 A / 24 A / 24 A

## On-grid Parameter (AC)

Max Output Power	10 kW
Max. Output Current	52 A
Nominal Grid Voltage	230 V
Max. Input Current from Grid	65A
Grid Voltage Range	185 - 276 V
Frequency Range	45 - 65 Hz
Power factor	-0.8 - 0.8
THDi(@rated power)	<3%

## Backup Terminal (AC)

<b>Nominal Output Power</b>	10 kW
<b>Nominal Voltage</b>	230 V
<b>Nominal Frequency</b>	50 Hz
<b>Nominal Output Current</b>	43.48A
<b>Output THDu (@Linear Load)</b>	< 3%

## General Data

<b>AC Connection`</b>	Single Phase
<b>PV Max. Efficiency</b>	98.20%
<b>Battery Charging / Discharging Efficiency</b>	95.00%
<b>Standby Power Loss</b>	≤15W
<b>Dimension (W x H x D)</b>	465x 665x 165mm
<b>Weight</b>	34 kg
<b>Noise Emission</b>	<45dB
<b>Operating Temperature Range</b>	-25 °C ~ +60 °C (>40°C Derating)
<b>Humidity Range</b>	5% ~ 95%
<b>Cooling Method</b>	Heatsink & Fan
<b>IP Rating</b>	IP65
<b>Monitoring</b>	LED & APP
<b>Communication</b>	Voltage & Current CT Clamp (2-wire) RS485 & Wi-Fi Dongle

## Battery

<b>Battery Type</b>	Sodium-Ion
<b>Battery Inputs</b>	2
<b>Nominal Battery Voltage</b>	45 V
<b>Battery Voltage Range</b>	33 - 60 V
<b>Max. Charging Voltage</b>	60 V
<b>Max. Continuous Charging / Discharging Current</b>	Up to 105 A per input (210A max)

## Certificates & Approvals

<b>CE-LVD</b>	IEC62109-1&2, IEC62040-1
<b>CE-EMC</b>	EN61000-6-1, EN61000-6-2, EN61000-6-3, EN61000-6-4 EN 61000-4-16, EN 61000-4-18, EN 61000-4-29
<b>Grid</b>	G98, G99, G100, VDE-AR-N 4105, VDE 0126-1-1 EN 50549-1, CEI 0-21, AS/NZS4777.2 NRS 097-2-1

## Protection Mechanisms

- ✓ DC Switch
- ✓ PV Insulation Resistance Detection
- ✓ Residual Current Monitoring
- ✓ Anti-islanding Protection
- ✓ AC Short Circuit Protection
- ✓ Overvoltage and Overload Protection
- ✓ AC Overvoltage Protection: Level 3
- ✓ Battery and PV Overvoltage: Level 2
- ✓ Surge Protection
- ✓ Lightning Protection
- ✓ Reverse Polarity Protection (PV & Battery)

