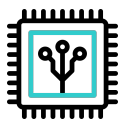


Mediterranean Sea 12kW Single Phase



Silicon Carbide Technology
Higher efficiency & Longer lifespan



Battery Charge/Discharge Rate
Up to 125 A per input (250A max)



Backup Power Supply
Dedicated EPS Port



Smart Tariff Compatible
Smart energy device integration & intelligent work modes



UK Cloud
Real time visibility
Monitor & configure from anywhere

Input Parameter (PV)

Max. DC Input Power	18 kWp
Starting Voltage	140 V
Max. Input Voltage	800 V
MPPT Voltage Range	130-800 V
Number of MPPT	3
Input String Per MPPT	1/1/1
Nominal Input Voltage	600V
MPPT Max. Input Current	20 A / 20 A / 20 A
MPPT Max. Short Circuit Current	24 A / 24 A / 24 A

On-grid Parameter (AC)

Max Output Power	12 kW
Max. Output Current	62 A
Nominal Grid Voltage	230 V
Max. Input Current from Grid	80 A
Grid Voltage Range	185 - 276 V
Frequency Range	45 - 65 Hz
Power factor	-0.8 - 0.8
THDi(@rated power)	<3%

Backup Terminal (AC)

Nominal Output Power	12 kW
Nominal Voltage	230 V
Nominal Frequency	50 Hz
Nominal Output Current	52.17A
Output THDu (@Linear Load)	< 3%

General Data

AC Connection`	Single Phase
PV Max. Efficiency	98.20%
Battery Charging / Discharging Efficiency	95.00%
Standby Power Loss	≤15W
Dimension (W x H x D)	465x 665x 165mm
Weight	34 kg
Noise Emission	<45dB
Operating Temperature Range	-25 °C ~ +60 °C (>40°C Derating)
Humidity Range	5% ~ 95%
Cooling Method	Heatsink & Fan
IP Rating	IP65
Monitoring	LED & APP
Communication	Voltage & Current CT Clamp (2-wire) RS485 & Wi-Fi Dongle

Battery

Battery Type	Sodium-Ion
Battery Inputs	2
Nominal Battery Voltage	45 V
Battery Voltage Range	33 - 60 V
Max. Charging Voltage	60 V
Max. Continuous Charging / Discharging Current	Up to 125 A per input (250A max)

Certificates & Approvals

CE-LVD	IEC62109-1&2, IEC62040-1
CE-EMC	EN61000-6-1, EN61000-6-2, EN61000-6-3, EN61000-6-4 EN 61000-4-16, EN 61000-4-18, EN 61000-4-29
Grid	G98, G99, G100, VDE-AR-N 4105, VDE 0126-1-1 EN 50549-1, CEI 0-21, AS/NZS4777.2 NRS 097-2-1

Protection Mechanisms

- ✓ DC Switch
- ✓ PV Insulation Resistance Detection
- ✓ Residual Current Monitoring
- ✓ Anti-islanding Protection
- ✓ AC Short Circuit Protection
- ✓ Overvoltage and Overload Protection
- ✓ AC Overvoltage Protection: Level 3
- ✓ Battery and PV Overvoltage: Level 2
- ✓ Surge Protection
- ✓ Lightning Protection
- ✓ Reverse Polarity Protection (PV)

